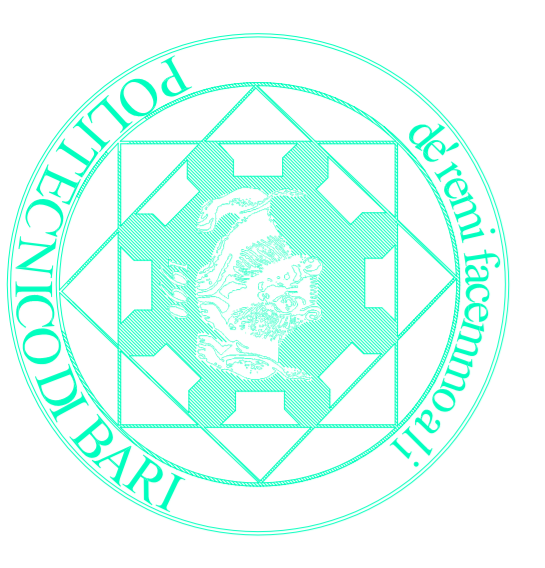
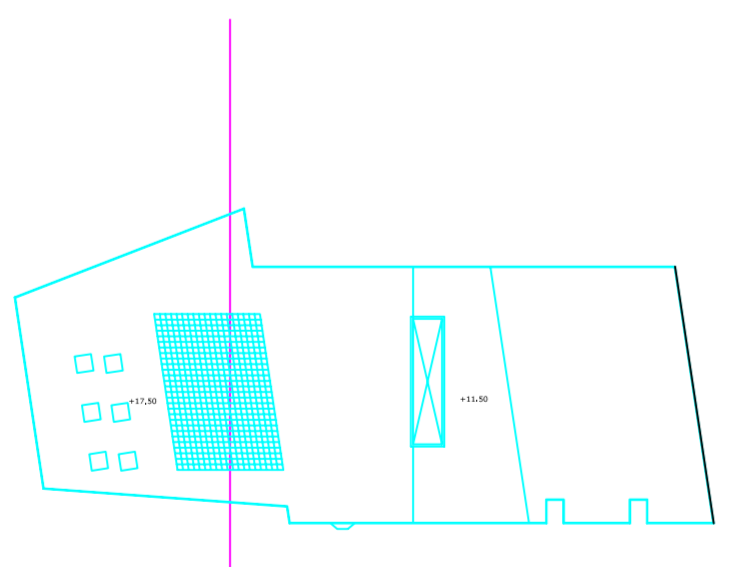
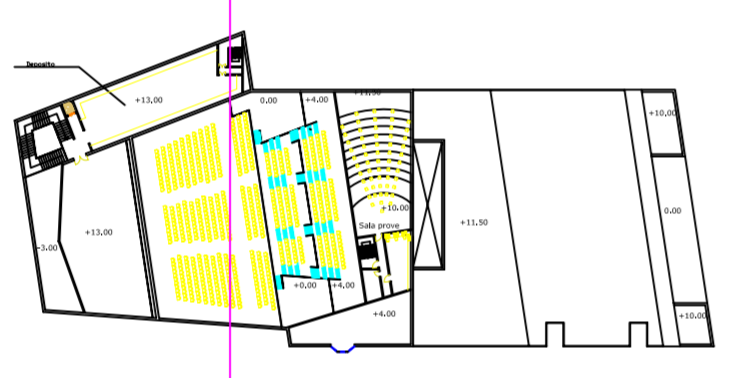
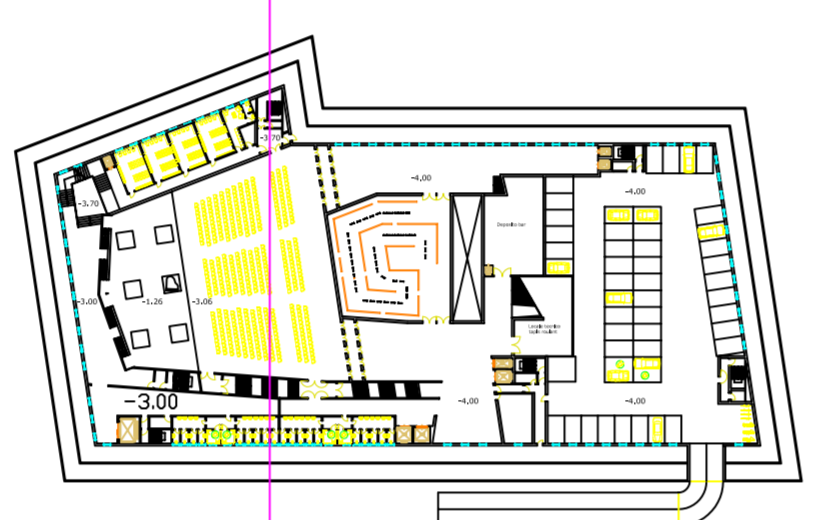
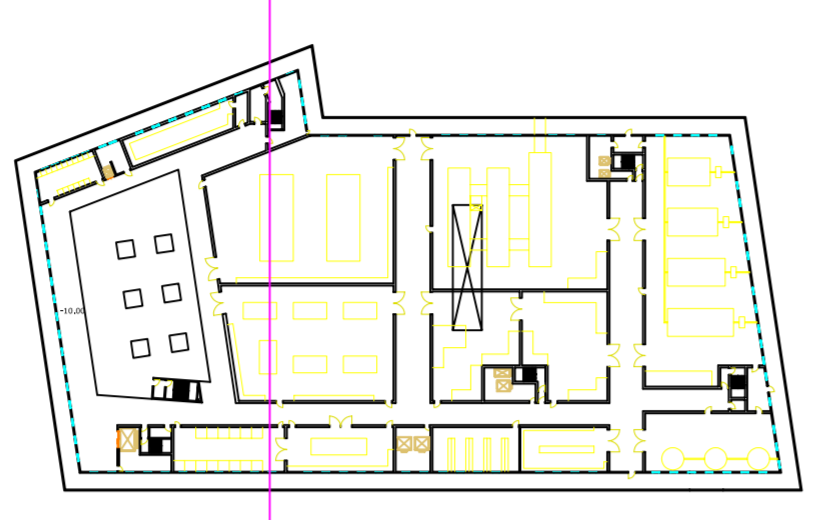
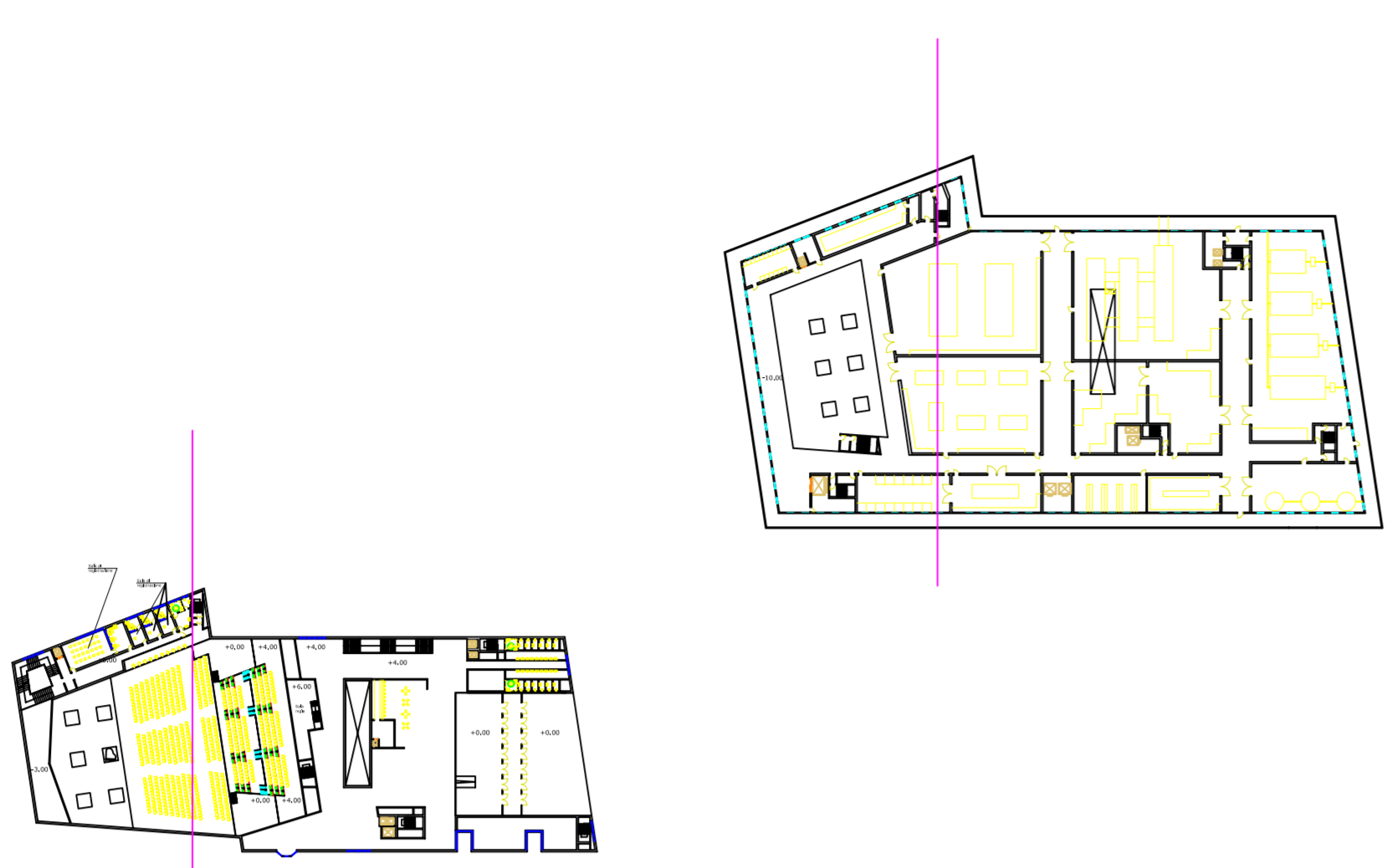


SEZIONE B-B'



FACOLTA' DI INGEGNERIA
 CORSO DI LAUREA IN INGEGNERIA EDILE
 DIPARTIMENTO DI ARCHITETTURA ED URBANISTICA

CORSO DI ARCHITETTURA E COMP. ARCHITETTONICA 2 + LAB.
 DOCENTE: PROF. ARCH. A. Calderazzi
 Ing. Arch. D. Bosco
 STUDENTE: Lorusso Nicola Mat. 513248K

TAVOLA

Sezione B-B'
 Scala: 1:200

10

ANNO ACCADEMICO 2002/2003
 Tema 8° anno: Auditorium

