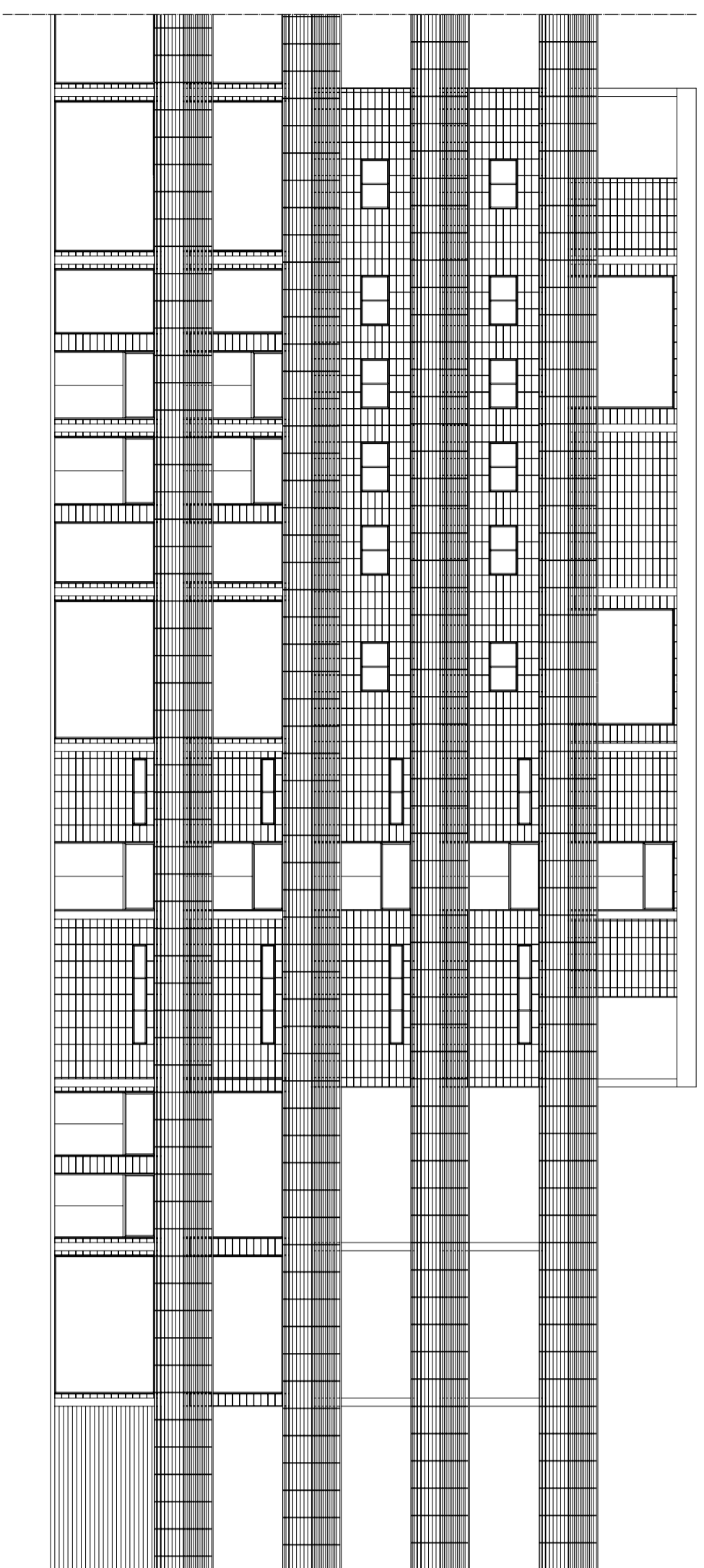
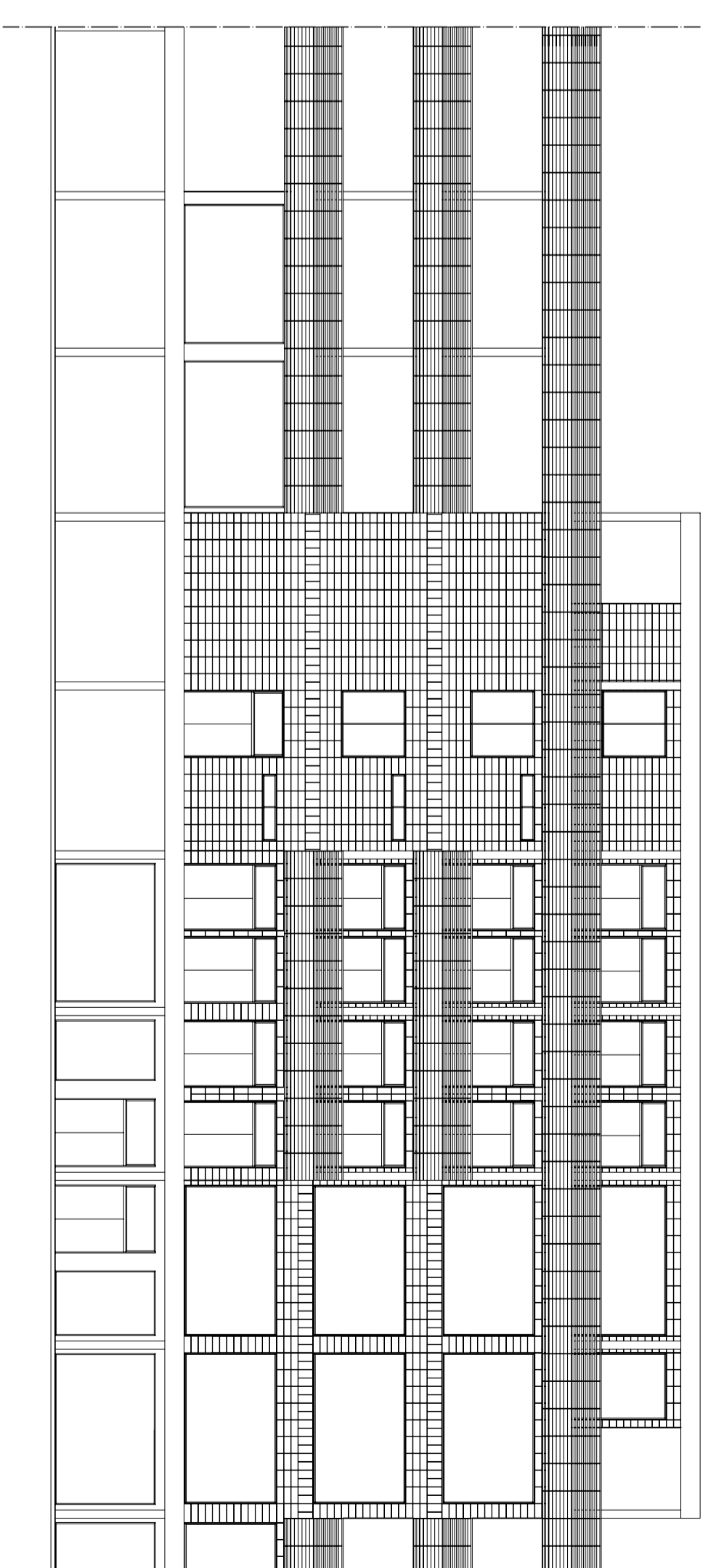


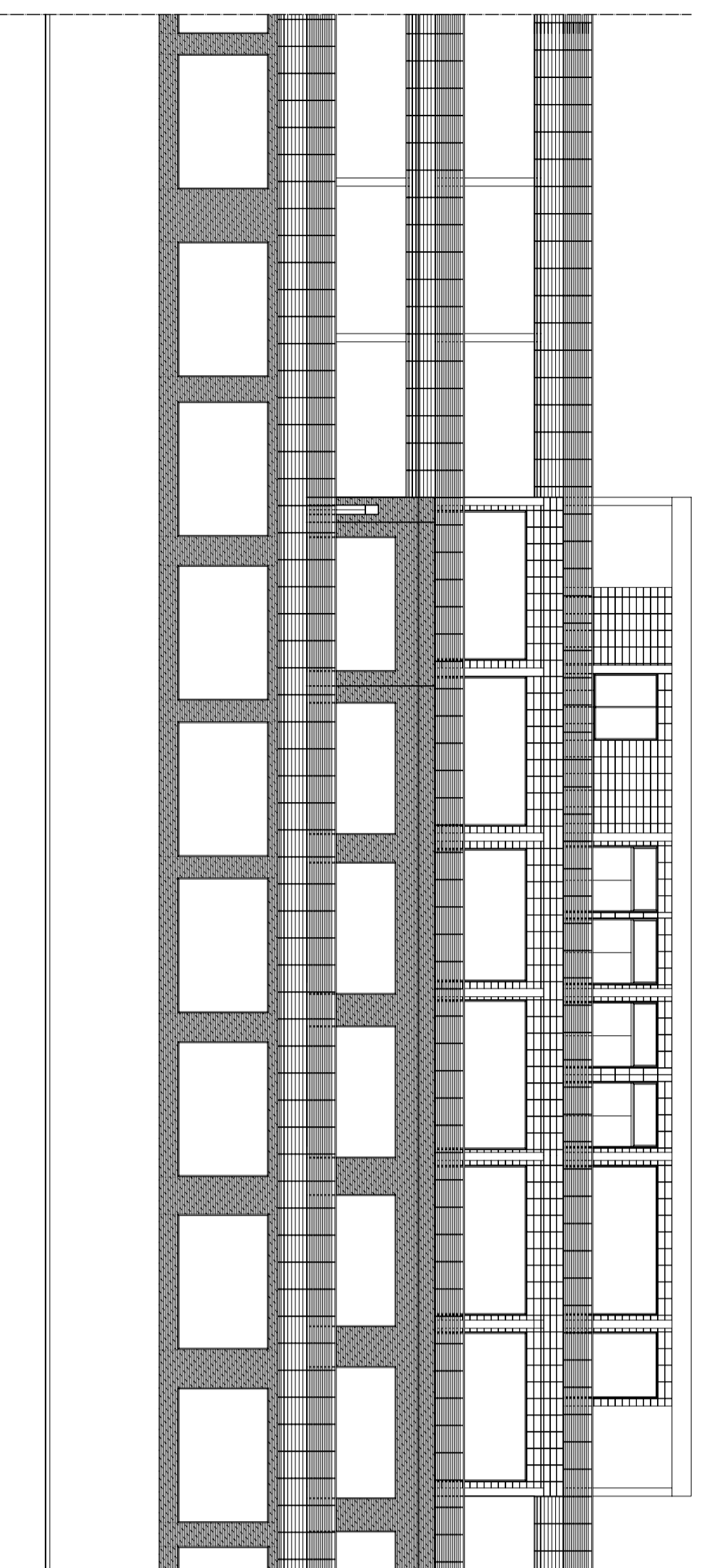
PROSPETTI



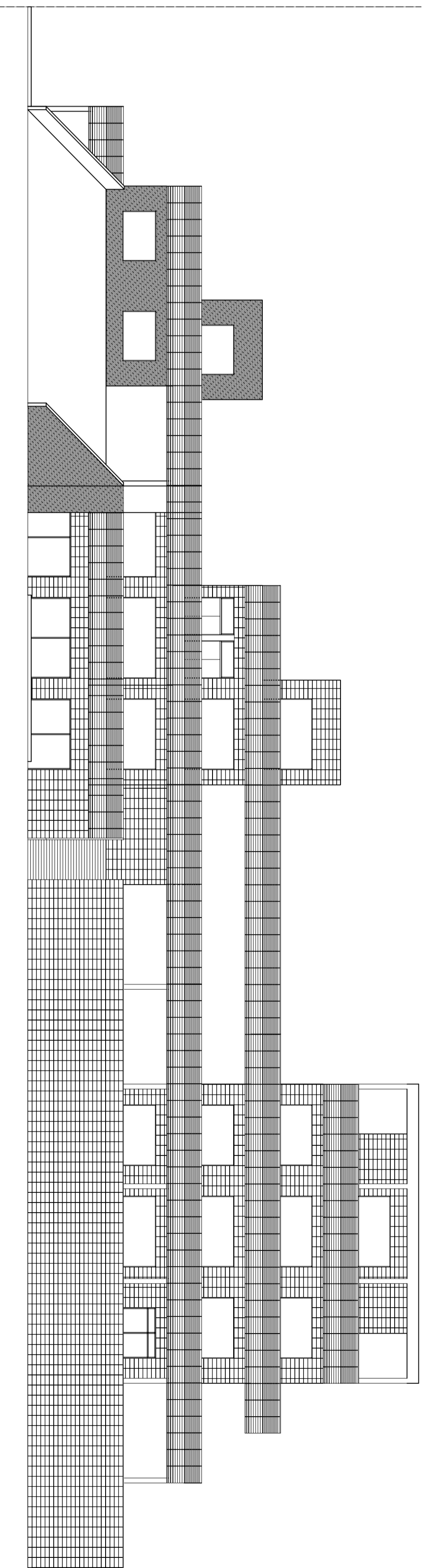
1



2



3

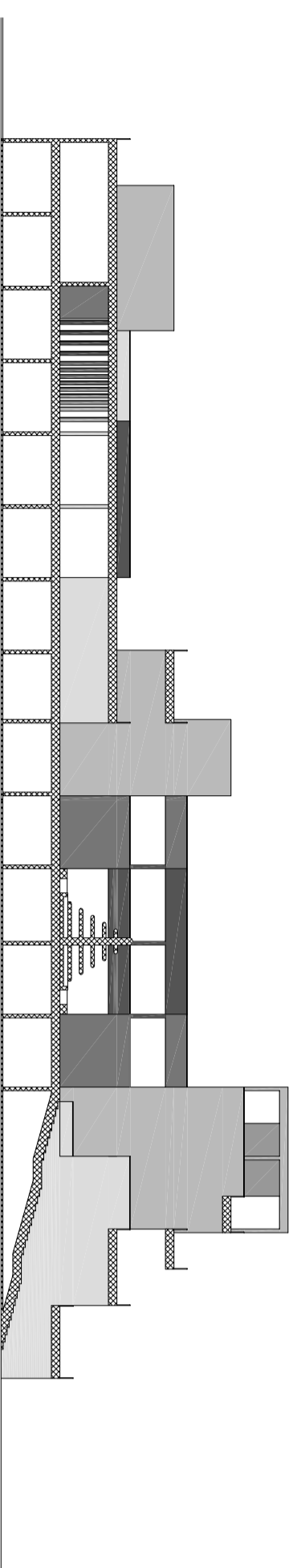


4

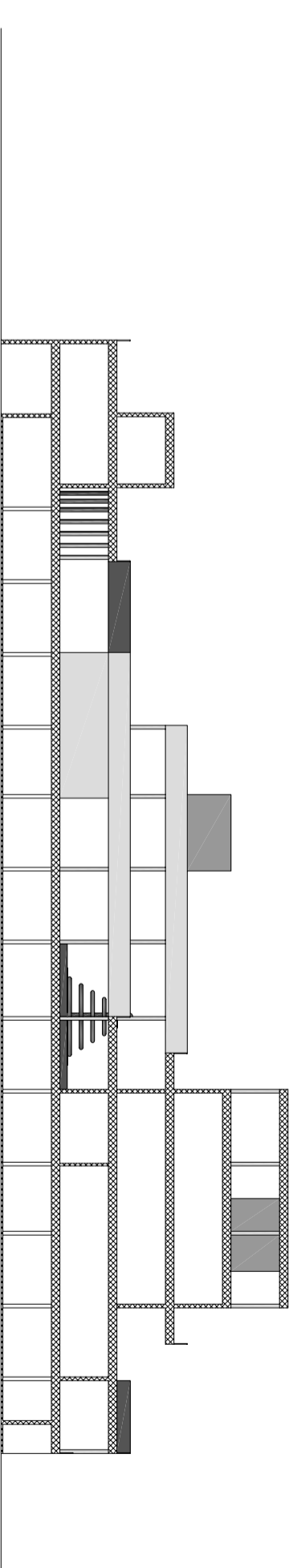
SEZIONI

SCALA 1:300

A - A'



B - B'



TAV. 3.2 PROSPETTI E SEZIONI TIPO



POLITECNICO DI BARI

I FACOLTA' DI INGEGNERIA - CORSO DI LAUREA IN INGEGNERIA EDILE

Dipartimento di Architettura ed Urbanistica

Corso di Architettura e Composizione Architettonica III + Lab.

TEMA D'ANNO:

RIPROGETTAZIONE AREA PUNTA PEROTTI

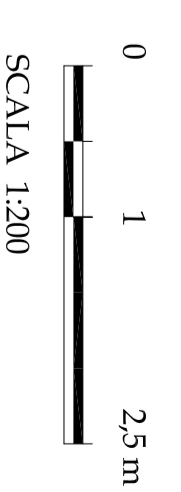
a.a. 2003/2004

DOCENTE

Prof. Arch. Mauro Scionti

STUDENTE:

Lorusso Nicola matr.



SCALA 1:200