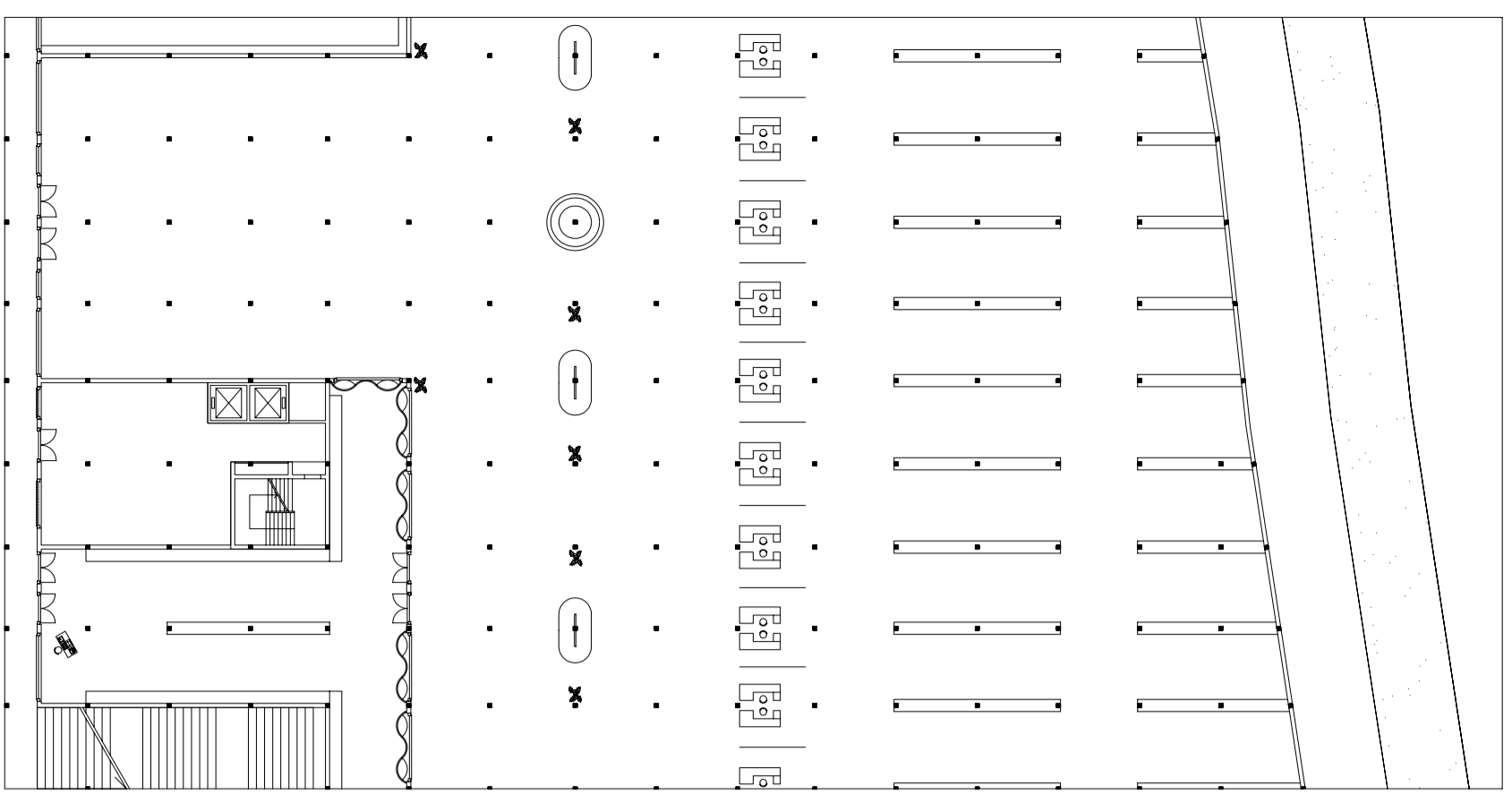
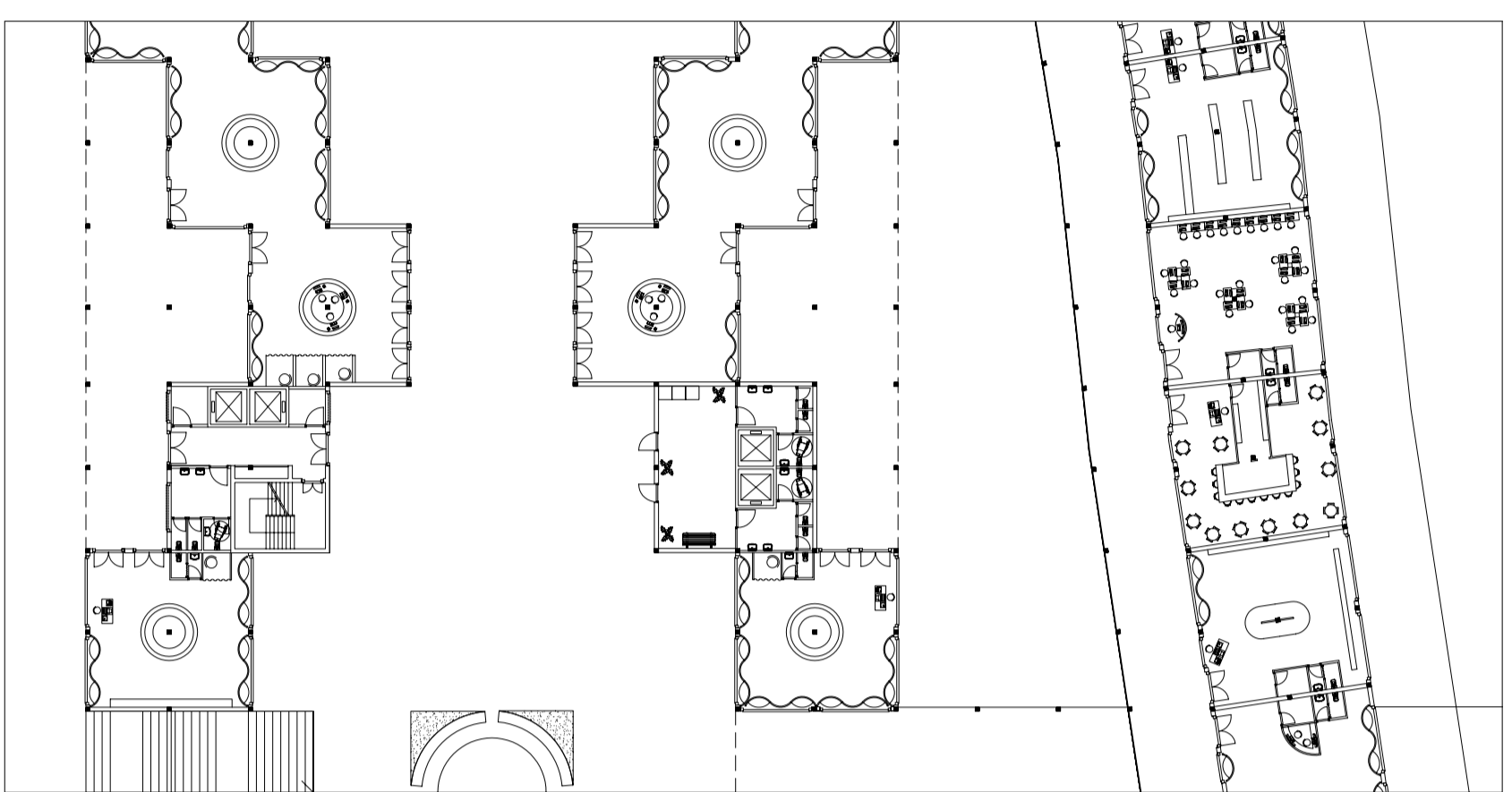


PIANO TERRA
+ 0,15 M

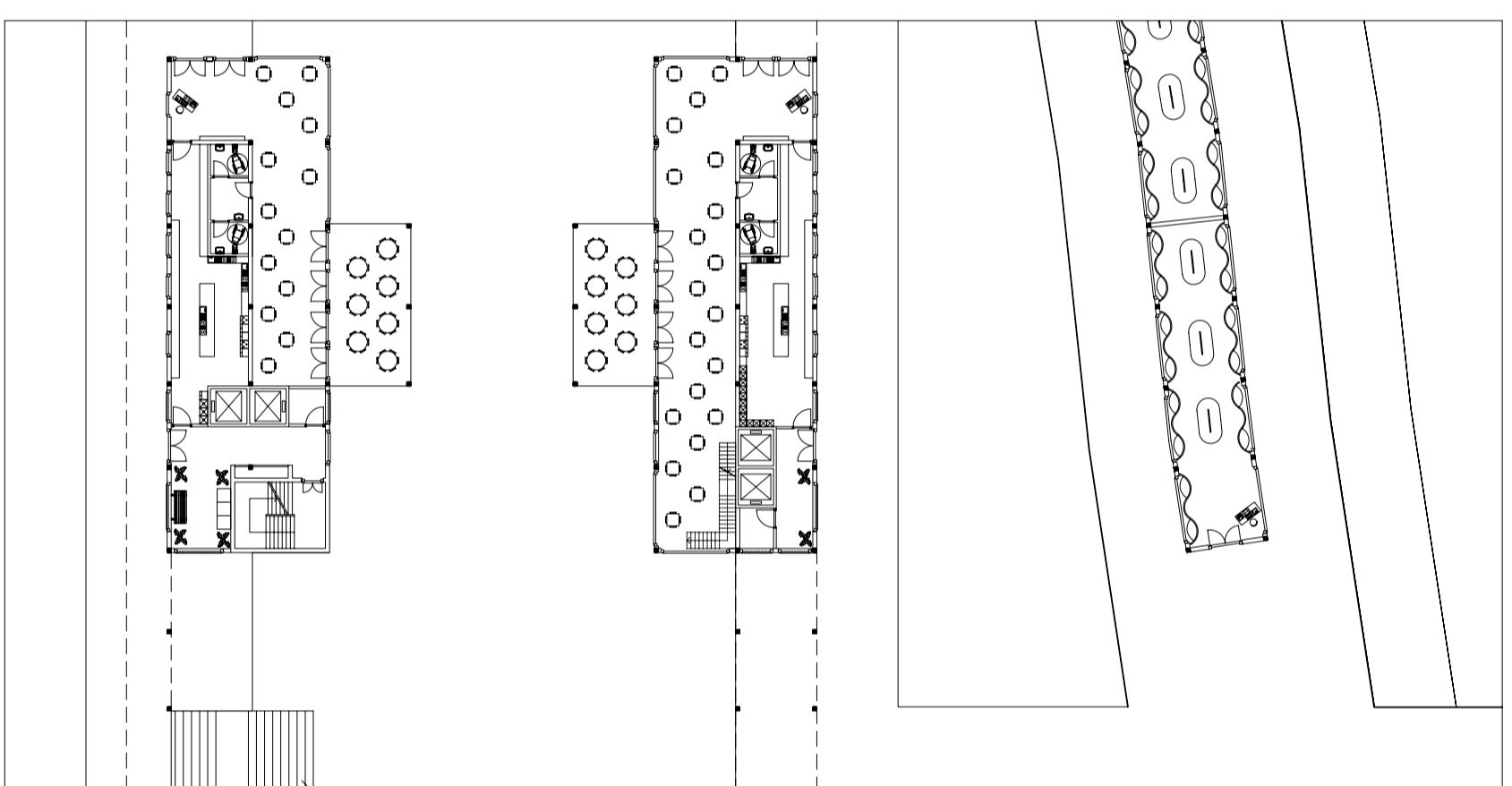


PRIMO PIANO
+ 4,85 M

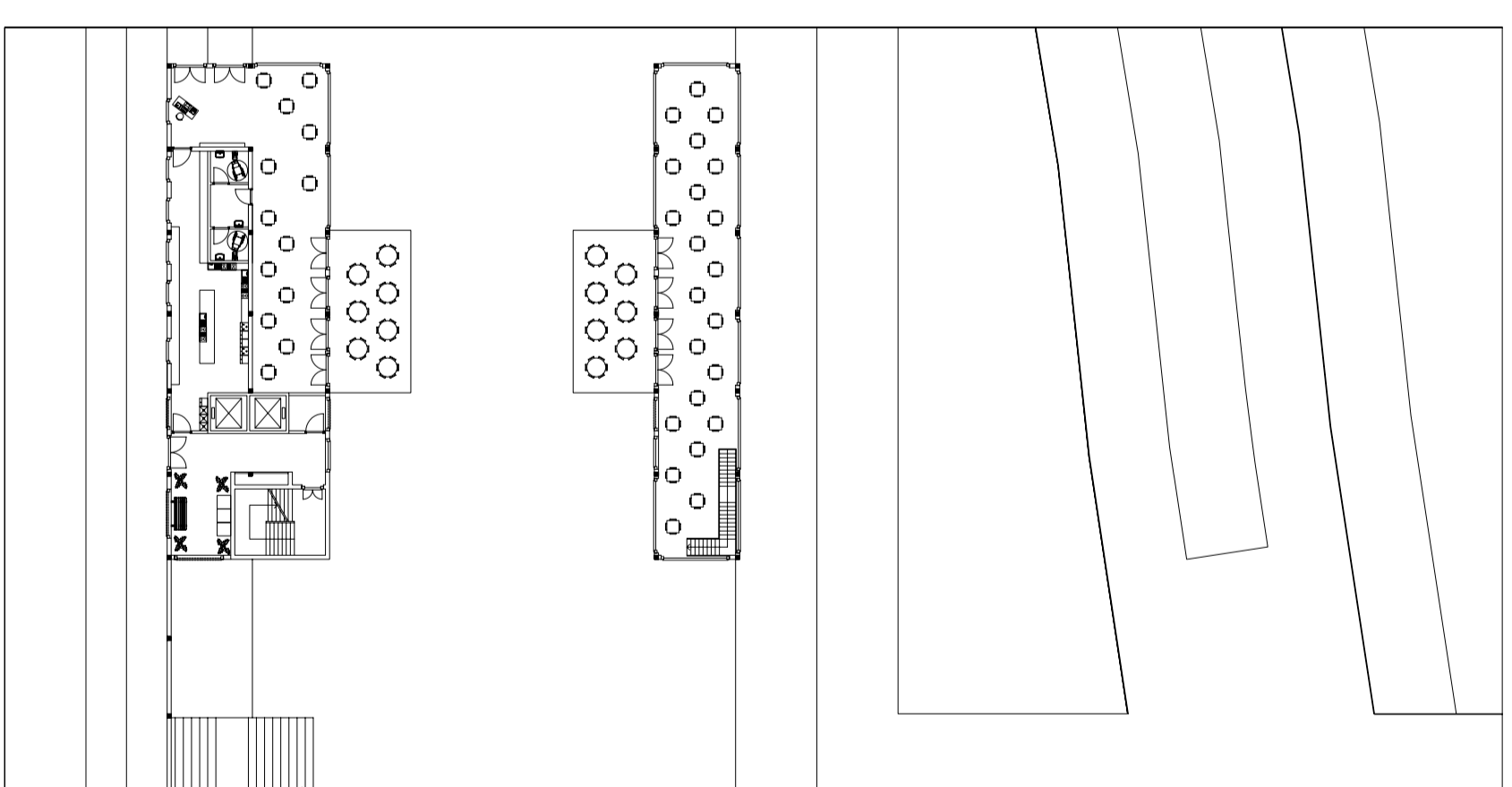


PIANTE

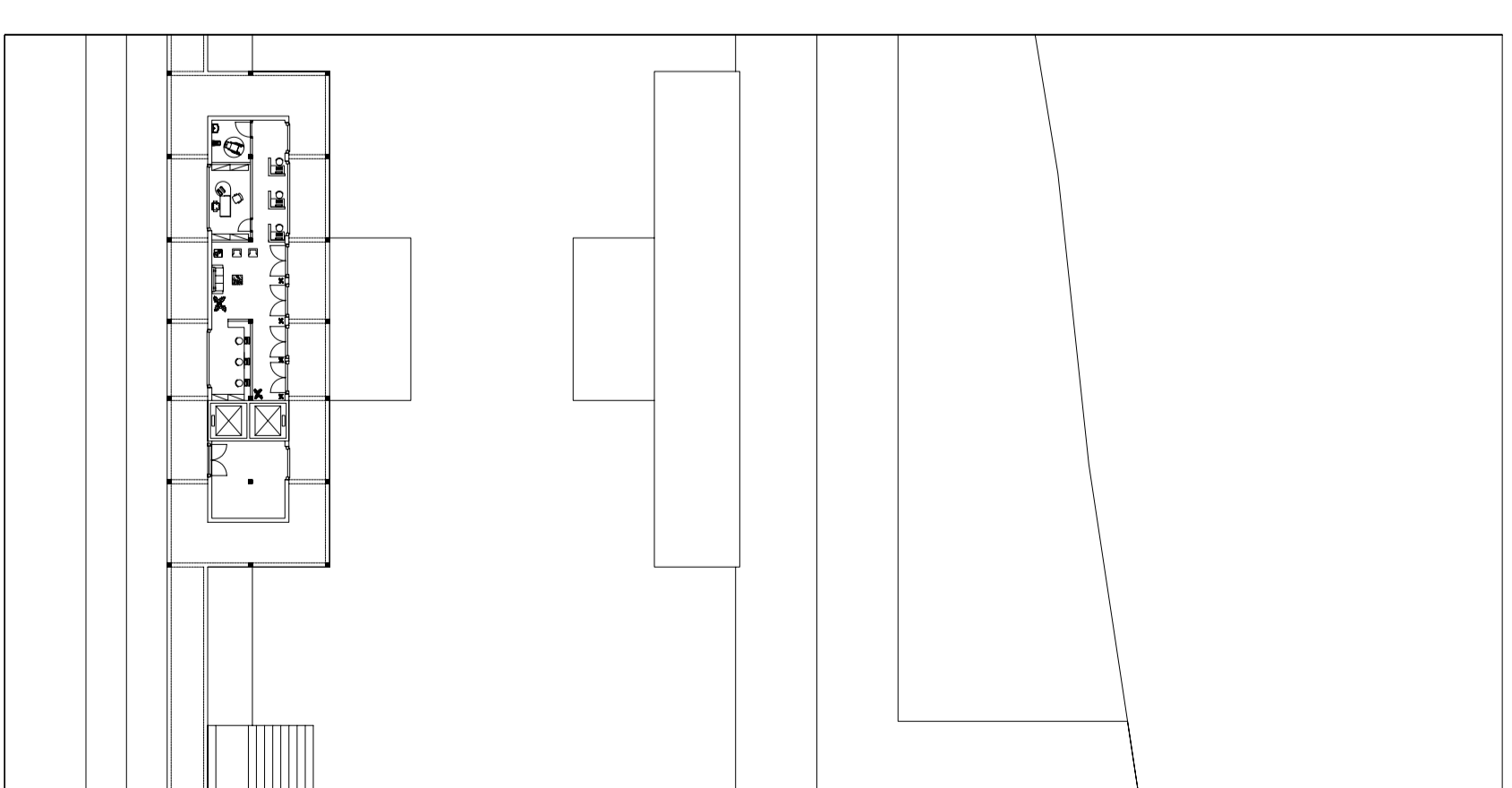
SECONDO PIANO
+ 9,55 M



TERZO PIANO
+ 14,25 M

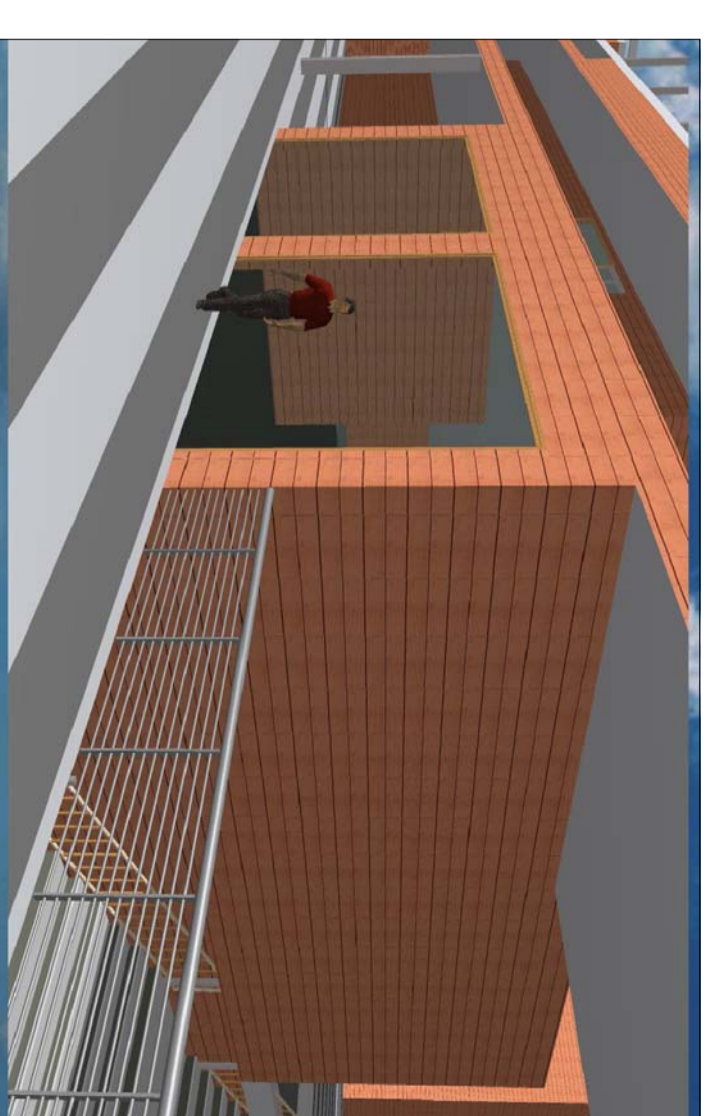
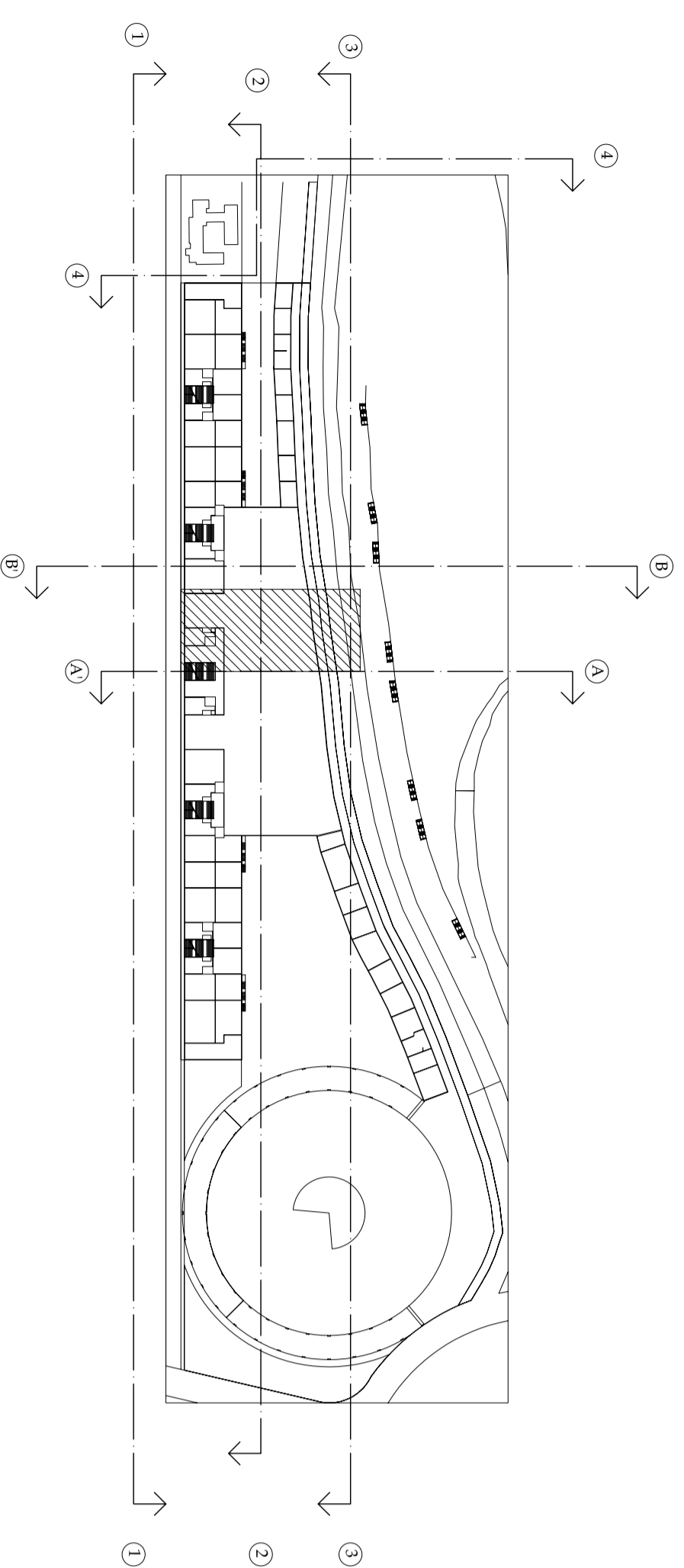


QUARTO PIANO
+ 18,95 M



INQUADRAMENTO
BLOCCO

SCALA 1:1000



TAV. 3.1 PIANTE TIPO



POLITECNICO DI BARI
I FACOLTA' DI INGEGNERIA - CORSO DI LAUREA IN INGEGNERIA EDILE
Dipartimento di Architettura ed Urbanistica
Corso di Architettura e Composizione Architettonica III + Lab.

TEMA D'ANNO:
RIPROGETTAZIONE AREA PUNTA PEROTTI
a.a. 2003/2004

DOCENTE
Prof. Arch. Mauro Scionti
STUDENTE:
Lorusso Nicola matr.

